



HDC | HDC HE

TE Internal #: T2040482101-000

Rectangular Contact Inserts, HE, Pin, 24, Screw Terminal, 24 Position, 14 – 20 AWG Wire Size, .5 – 2.5 mm² Wire Size, Power & Signal, HDC HE

[View on TE.com >](#)

Connectors > Rectangular Connectors > Rectangular Contact Inserts



Rectangular Connector Insert Type: **HE**

Contact Type: **Pin**

Contact Insert Pole Configuration: **24**

Termination Method to Wire & Cable: **Screw Terminal**

Number of Positions: **24**

Features

Product Type Features

Product Type	Insert
Rectangular Connector Insert Type	HE
Sealable	No

Configuration Features

Number of Positions	24
---------------------	----

Contact Features

Contact Type	Pin
Contact Insert Pole Configuration	24

Termination Features

Termination Method to Wire & Cable	Screw Terminal
------------------------------------	----------------

Dimensions

Wire Size	.5 – 2.5 mm ²
-----------	--------------------------

Operation/Application

Circuit Application	Power & Signal
---------------------	----------------

Product Compliance

[For compliance documentation, visit the product page on TE.com>](#)

EU RoHS Directive 2011/65/EU

Compliant with Exemptions

EU ELV Directive 2000/53/EC

Compliant with Exemptions

China RoHS 2 Directive MIIT Order No 32, 2016

Restricted Materials Above Threshold

EU REACH Regulation (EC) No. 1907/2006

Current ECHA Candidate List: JUNE 2022
(224)Candidate List Declared Against: JUNE
2022 (224)

SVHC > Threshold:

Pb (3.7% in Component Part)

Article Safe Usage Statements:Do not eat, drink or smoke when using this product. Wash thoroughly after
handling. Recycle if possible and dispose of the article by following all applicable
governmental regulations relevant to your geographic location.

Halogen Content

Not Low Halogen - contains Br or Cl > 900
ppm.

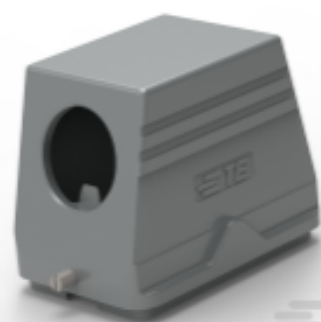
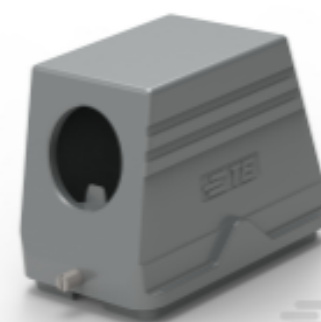
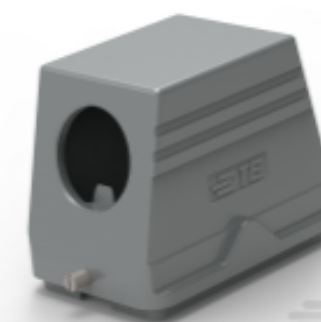
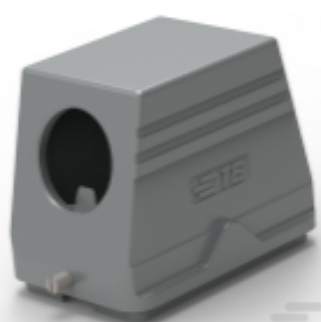
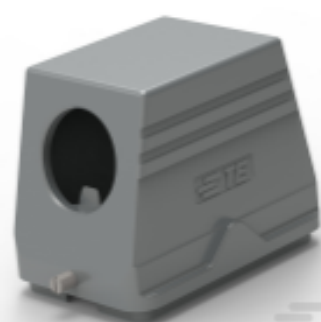
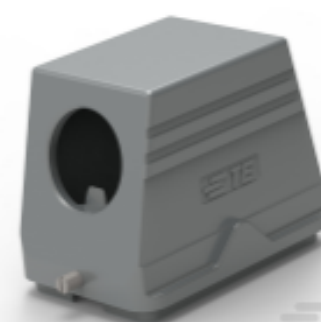
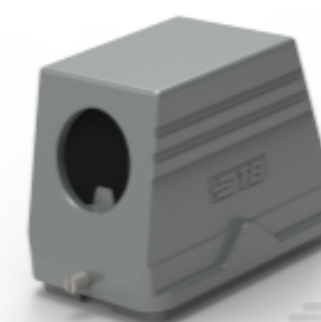
Solder Process Capability

Not reviewed for solder process capability

Product Compliance Disclaimer

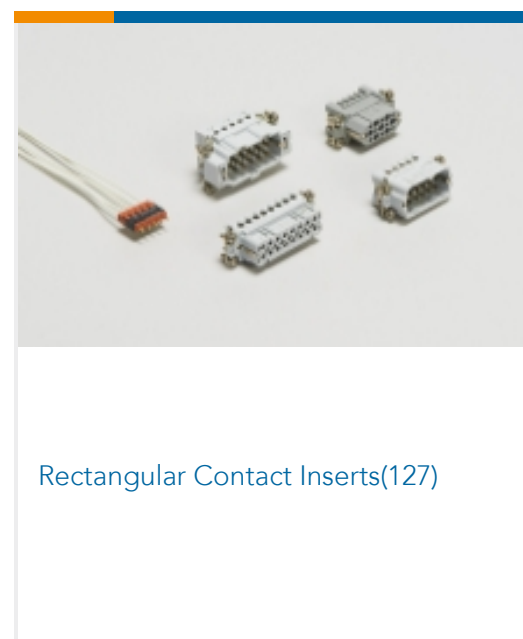
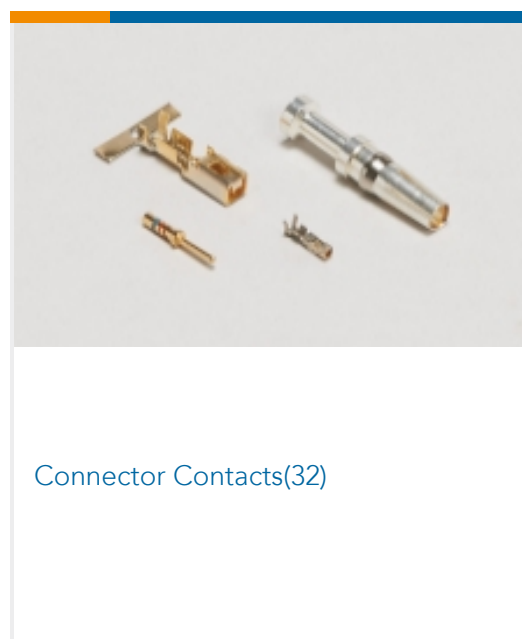
This information is provided based on reasonable inquiry of our suppliers and represents our current actual knowledge based on the information they provided. This information is subject to change. The part numbers that TE has identified as EU RoHS compliant have a maximum concentration of 0.1% by weight in homogenous materials for lead, hexavalent chromium, mercury, PBB, PBDE, DBP, BBP, DEHP, DIBP, and 0.01% for cadmium, or qualify for an exemption to these limits as defined in the Annexes of Directive 2011/65/EU (RoHS2). Finished electrical and electronic equipment products will be CE marked as required by Directive 2011/65/EU. Components may not be CE marked. Additionally, the part numbers that TE has identified as EU ELV compliant have a maximum concentration of 0.1% by weight in homogenous materials for lead, hexavalent chromium, and mercury, and 0.01% for cadmium, or qualify for an exemption to these limits as defined in the Annexes of Directive 2000/53/EC (ELV). Regarding the REACH Regulation, the information TE provides on SVHC in articles for this part number is based on the latest European Chemicals Agency (ECHA) 'Guidance on requirements for substances in articles' posted at this URL: <https://echa.europa.eu/guidance-documents/guidance-on-reach>

Compatible Parts

TE Part # T2040482201-000
HE-024-F 25-48TE Part # T1310480125-000
H48B-TS-RO-M25TE Part # T1310480129-000
H48B-TS-RO-PG29TE Part # T1310480132-000
H48B-TS-RO-M32TE Part # T1310480136-000
H48B-TS-RO-PG36TE Part # T1310480140-000
H48B-TS-RO-M40TE Part # T1310480142-000
H48B-TS-RO-PG42TE Part # T1310480150-000
H48B-TS-RO-M50



Also in the Series | **HDC HE**



Documents

Product Drawings

HE-024-M 25-48

English

CAD Files

3D PDF

3D

Customer View Model



[ENG_CVM_CVM_T2040482101-000_B.2d_dxf.zip](#)

English

Customer View Model

[ENG_CVM_CVM_T2040482101-000_B.3d_igs.zip](#)

English

Customer View Model

[ENG_CVM_CVM_T2040482101-000_B.3d_stp.zip](#)

English

By downloading the CAD file I accept and agree to the [Terms and Conditions](#) of use.

Datasheets & Catalog Pages

[Heavy Duty Connectors](#)

English

[HEAVY DUTY CONNECTORS](#)

English

Product Specifications

[Application Specification](#)

English

[Application Specification](#)

Agency Approvals

[Agency Approval Document](#)

English